

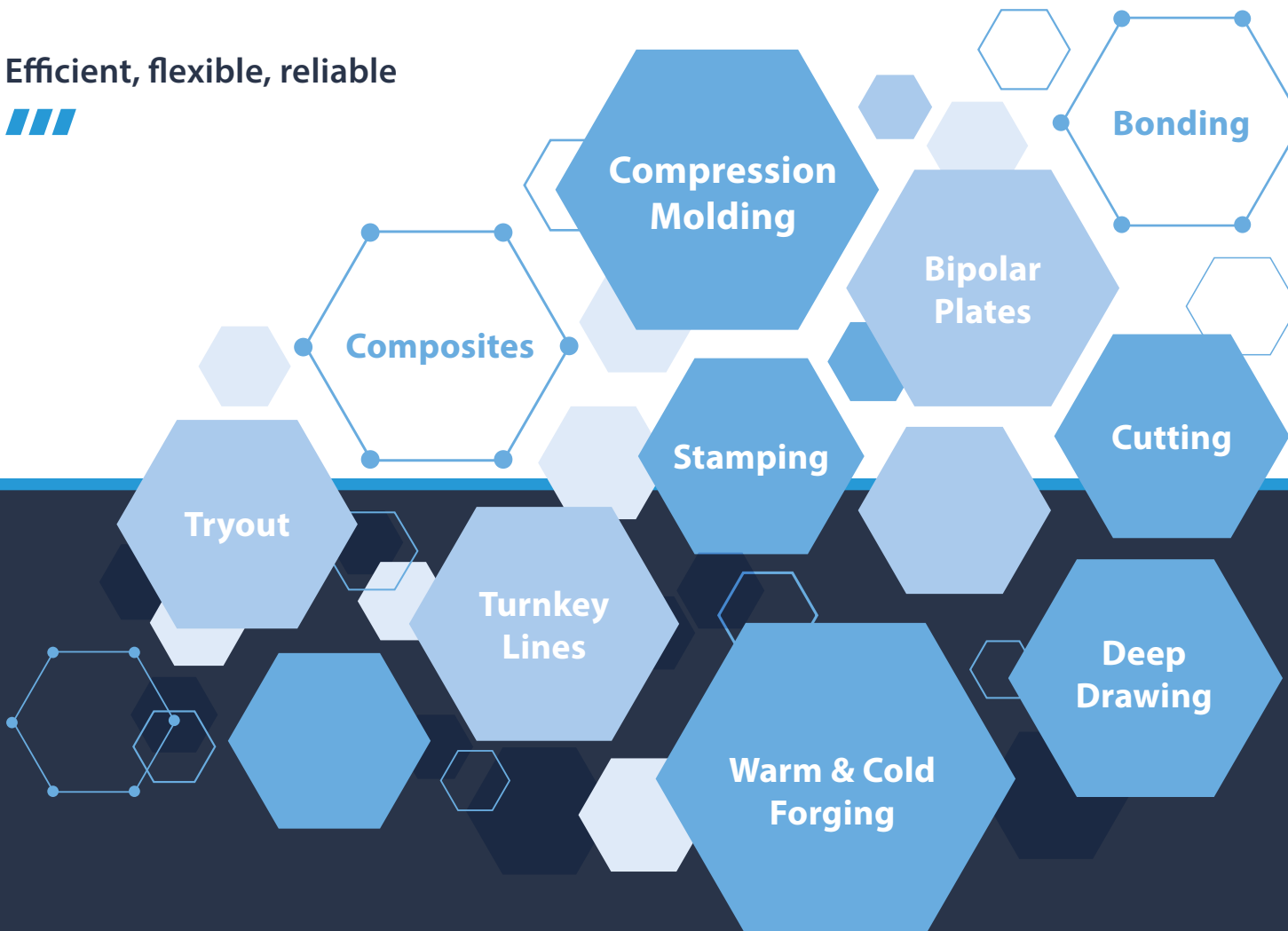
Laminating Technology
Plastic Processing
Encapsulation Technology
Metalforming Technology
Powder Technology
Technical Services

LAUFFER

Metalforming Technology

Innovative solutions for precise forming technologies

Efficient, flexible, reliable



**FORMING
YOUR IDEAS**

LAUFFER
PRESSEN

The LAUFFER Metalforming Technology Portfolio

/// Customized Presses

Straight Sided Press R-Type

Straight sided press with variable press frame design, ram guiding, drive concepts and flexible automation solutions

Universal application

Servo Presses S-Line

The S-Line servo-hydraulic press – energy-efficient, high-precision and energy-saving

Deep Drawing, Stamping

Plate Design GKP

Bolted plate design with plate heating, suitable for low dynamic processes and long-term pressing

Bipolar Plates, Composites, Compression Molding

C-Frame Presses EPT

Allround C-frame press with customized sizes and features for best-in-class productivity

Cutting, Stamping

Turnkey Lines

Automated turnkey solutions designed precisely for individual requirements

/// Standard Presses

Basic Line RBx

Allround press in standard design impresses with fixed press sizes, cost-effective design and proven LAUFFER quality

Cutting, Deep Drawing

Tryout RTx

Straight sided press design for tool tryout with moving table, stepless ram locking and sensitive ram positioning

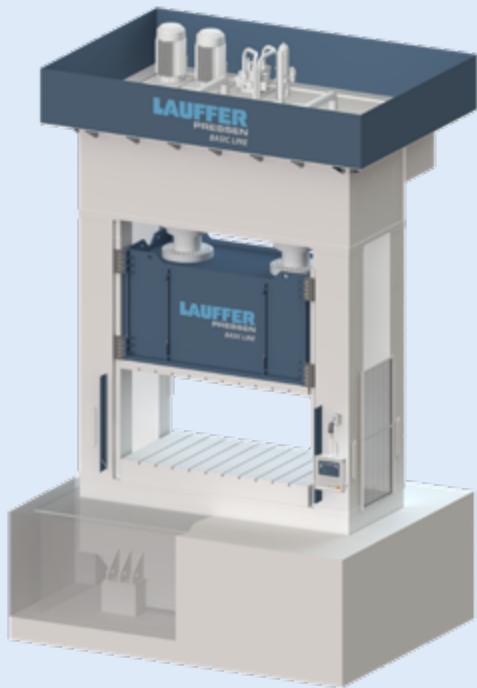
Turnkey Lines



Servo Press



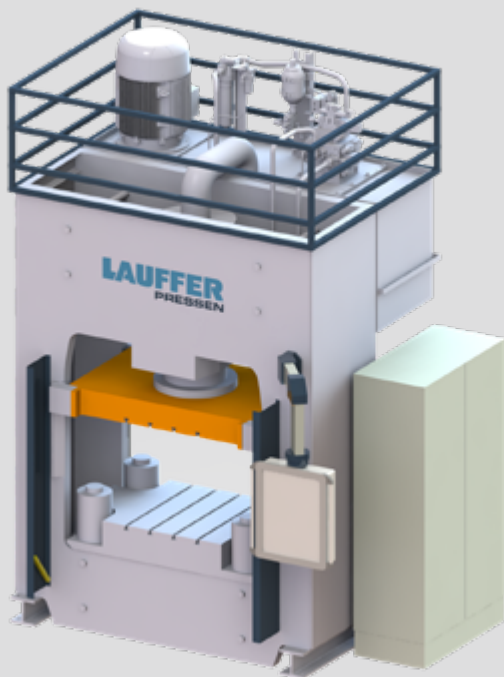
Basic Line



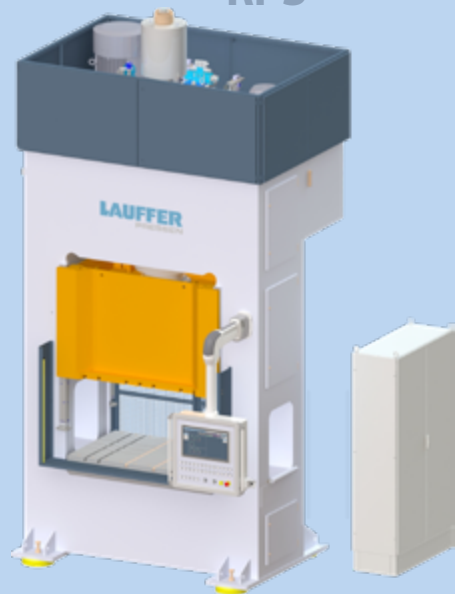
Tryout



GKP



RPS

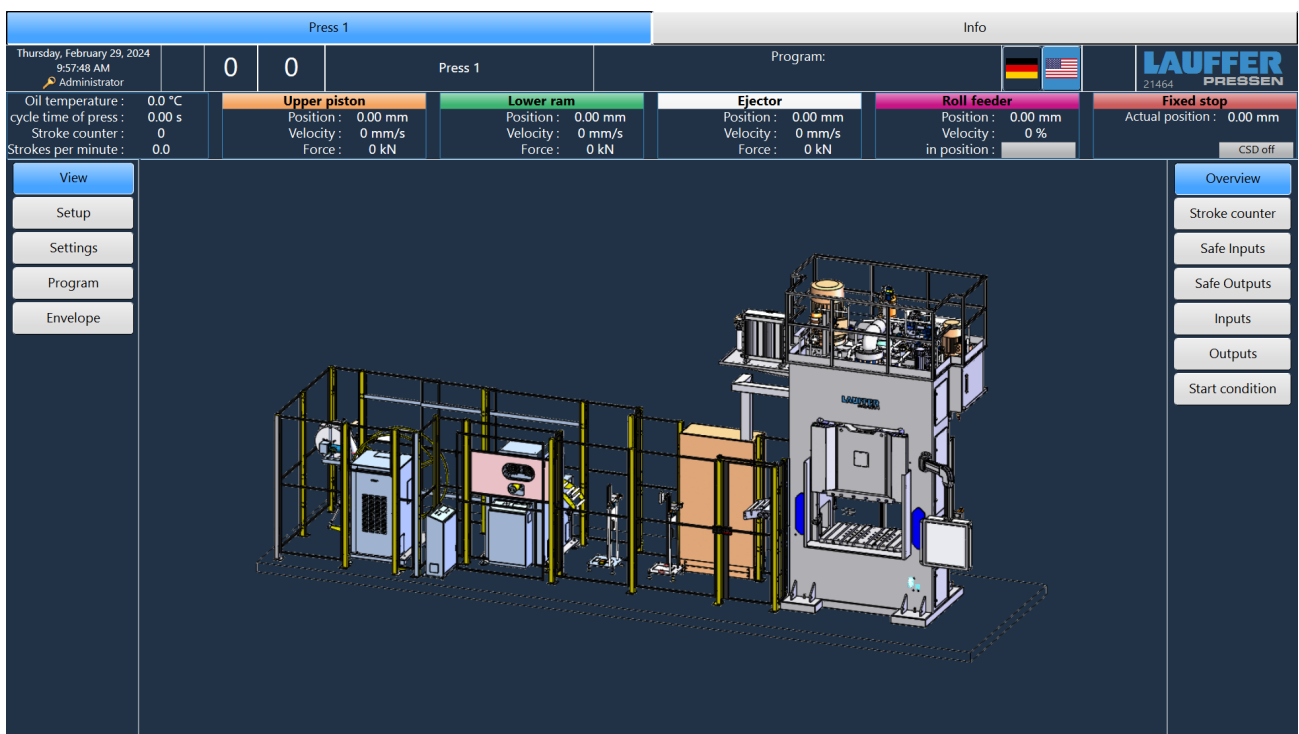


Press Attributes

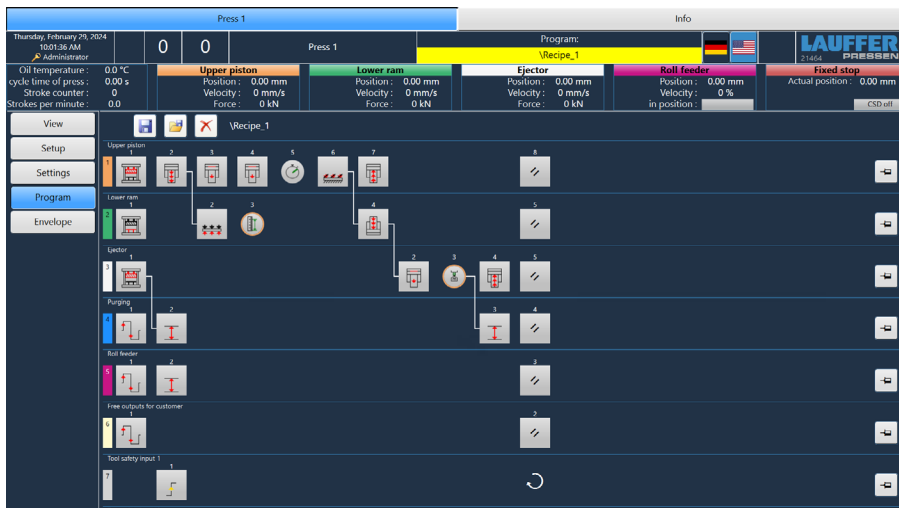
The hydraulic presses by Maschinenfabrik LAUFFER GmbH & Co. KG impress with their performance and versatility. Whether standardized or customized, individual or as fully automatic press lines - they adapt flexibly to the specific requirements of various industries. Precise hydraulic technology enables exact control of pressure and speed.

Their robustness and high efficiency makes them the optimal choice for a variety of applications, whether in massive forming, metal forming, plastic shaping, or tool testing. Their user-friendliness and innovative technology are indispensable in numerous industries, from automotive to medical technology. LAUFFER stands for quality and flexibility, providing tailored solutions for the various manufacturing requirements of our customers.

LAUFFER HMI



The LAUFFER Visualization (HMI) LaHMI serves as a human-machine interface and enables all data to be entered via a scratch-resistant industrial touch PC, which is mounted in a swivelling, operating gondola on the press frame.



- » Graphic press sequence
- » Freely programmable
- » Intuitive operation
- » Compact display
- » Clear synoptics

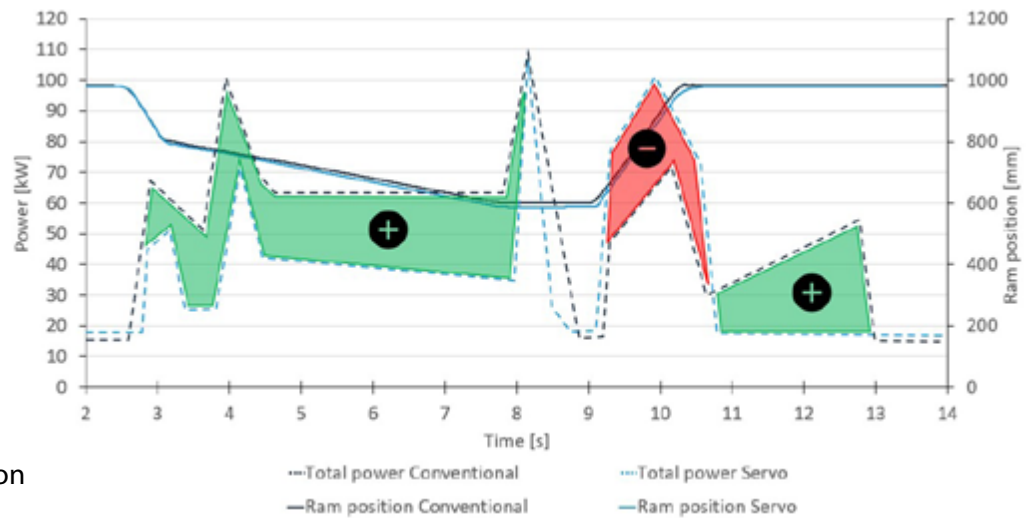
/// Servo-Drive and Options

Servo drive

- » Energy saving
- » Sustainability
- » Peak power
- » Precision

Options

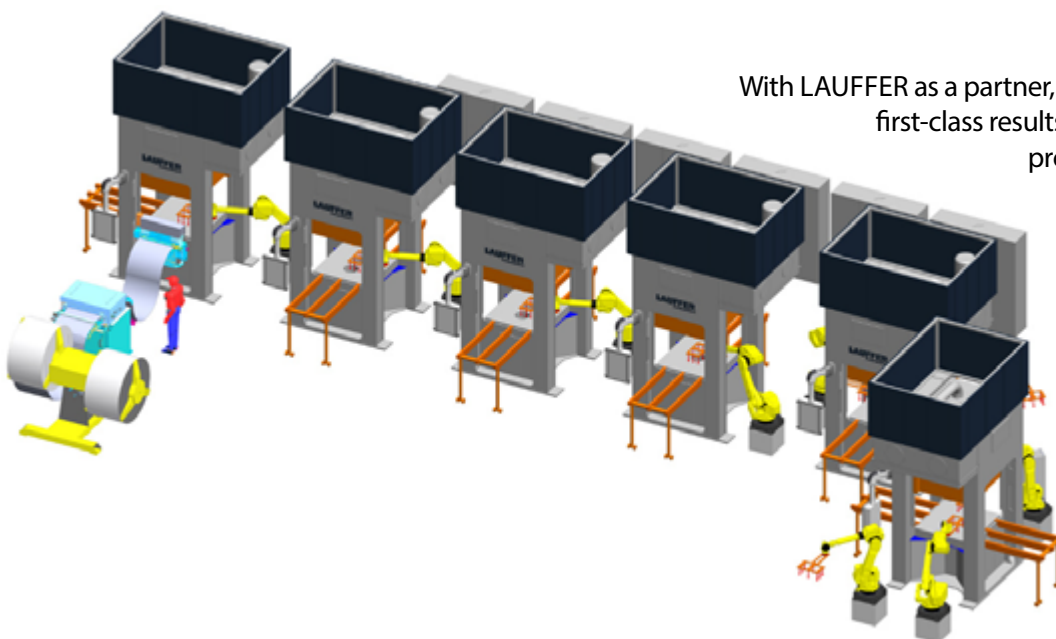
- » Tool change
- » Industry 4.0
- » Cushion
- » Shock dampers
- » Parallelism regulation



Energy savings up to 35 %

/// Turnkey-Lines with LAUFFER Automation

LAUFFER offers a state-of-the-art, fully automated press line that takes into account all edge parameters and customer-specific requirements, integrated into a unified control concept. The press line enables seamless integration of blank loaders, coil lines, robots and other components into a customized automation concept.



With LAUFFER as a partner, companies achieve first-class results and optimize their production processes.

Forming your ideas

For over 150 years, LAUFFER has proven that consistent quality and extensive process knowledge prevail in the market. Today, we are among the leading manufacturers of hydraulic presses and equipment in the fields of laminating and composite technology, plastic and encapsulation technology, forming technology and powder technology. With over 280 dedicated employees, we develop solutions to build presses, making our customers successful worldwide. We are dealing with the thoughts and ideas of our customers and provide solutions for their tasks. Therefore, we are always a reliable partner. We build presses with progress and tradition.

- » **Laminating Technology**
- » **Plastic Processing Technology**
- » **Encapsulation Technology**
- » **Forming Technology**
- » **Powder Technology**
- » **Services**

